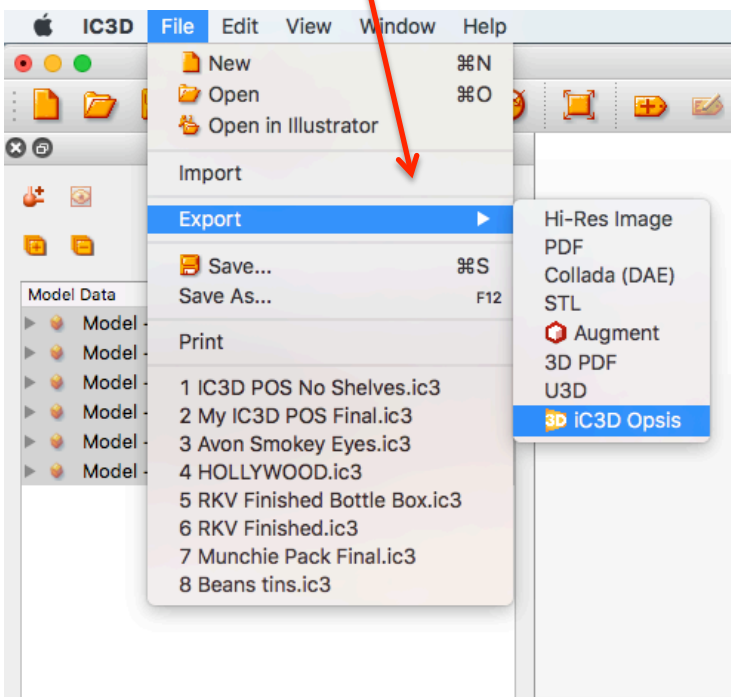
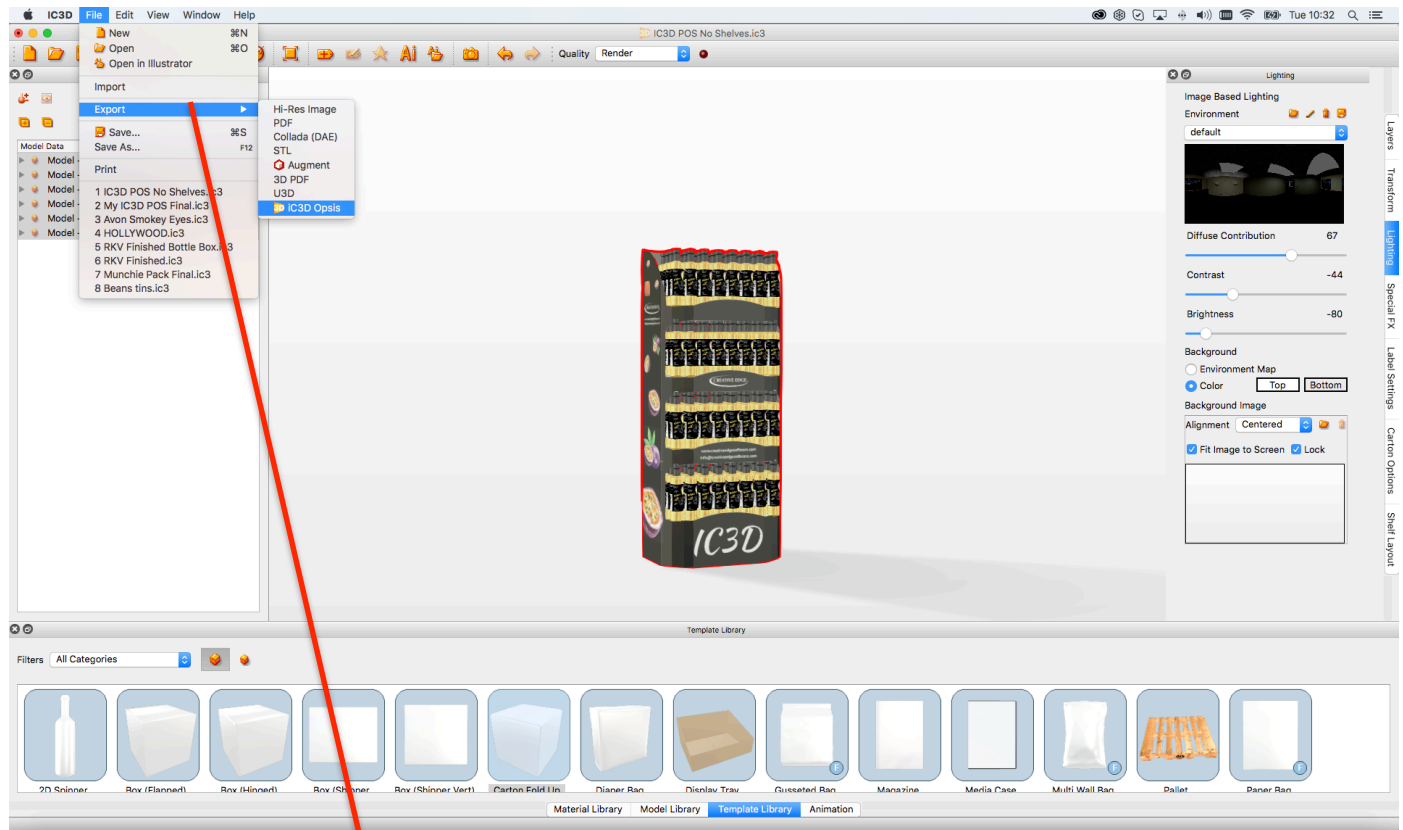


iC3D Opsis

How to Export to Opsis from iC3D

Once you have used iC3D to create your required model.

Select “File” from the main menu in the top left corner of your screen, scroll to “Export”, and then select the “iC3D Opsis” option from the “Export” drop down menu.



Once you have selected this option, the “Opsis Export box” will appear on your screen.

You will need to enter your Username & Password where stated in the box (this is your Opsis account log-in details that was provided to you).

In the next 3 fields you can enter:

“Model Name” (A name of your choice up to 60 characters)

“Job ID” (Ref name/No. of your choice up to 60 characters, if required, or leave blank)

“Customer Name” (Customer name of your choice up to 60 characters, if required, or leave blank)

*** Please Note:** You must enter a “Model Name” as a minimum naming requirement to export the model to Opsis.

The “Export Spin Animation”: if you select this option, your model will be exported to Opsis with a default 360° spin animation on the models horizontal axis.

*** Please note:**

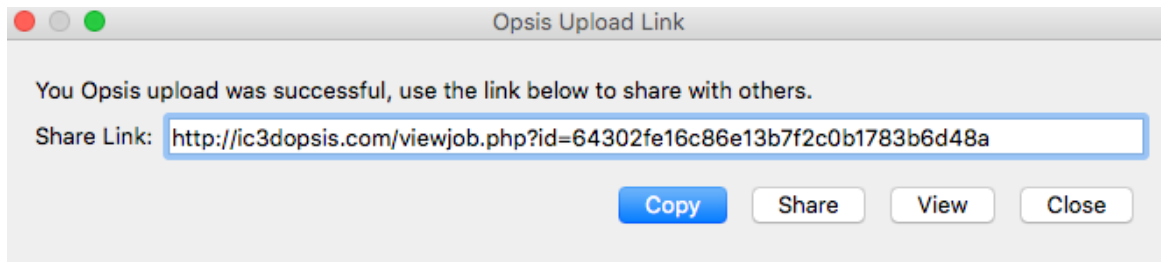
If you have created your own model animation, using iC3D’s animation tools, the “Export Timeline Animation” option will also become available for selection. In this example the model does not have any animation created, so the only option you have is to select “Export Spin Animation” if you require this option.

On the right hand side of the Opsis export window, you will notice a thumbnail image of your model, this is the exact cropped view you will see when you upload and view your model in Opsis. If you click the + or – symbols underneath this window, you can zoom in or out from your model. This is useful if you have created an animation timeline of your own to make sure the full animation will fit in the exported window view.

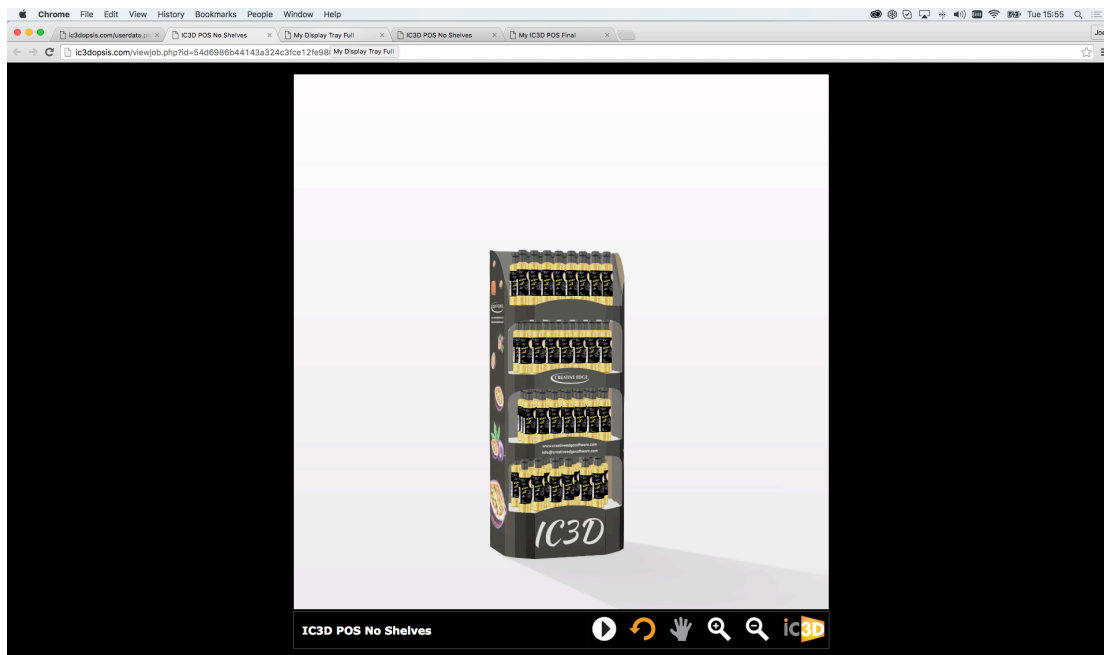
Once you are happy with these settings, click the “Send to Opsis Button”

This will export the model to your Opsis account and also generate a Hyperlink to view the exported model in your own web browser, on your machine.

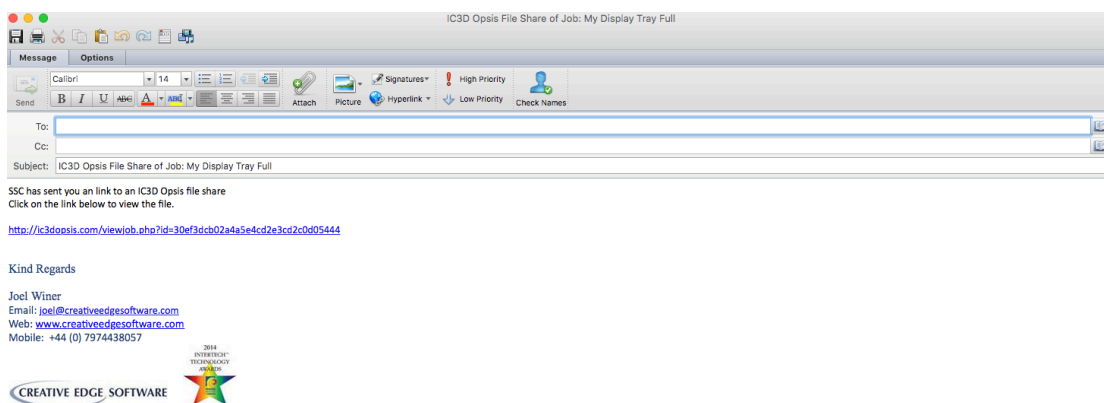
Once the export is complete you will see the below box appear on your screen



Click “Copy”, and then paste into your web browser address bar to load and view the model in the Opsis viewer



Click “Share”, this will embed the generated Hyperlink in to a default email. You can then share the link with anyone you require to view the model. Just ask them to click on the Hyperlink when they receive the email, and this will automatically launch the model and open it within the Opsi viewer using their default web browser, on their machine.

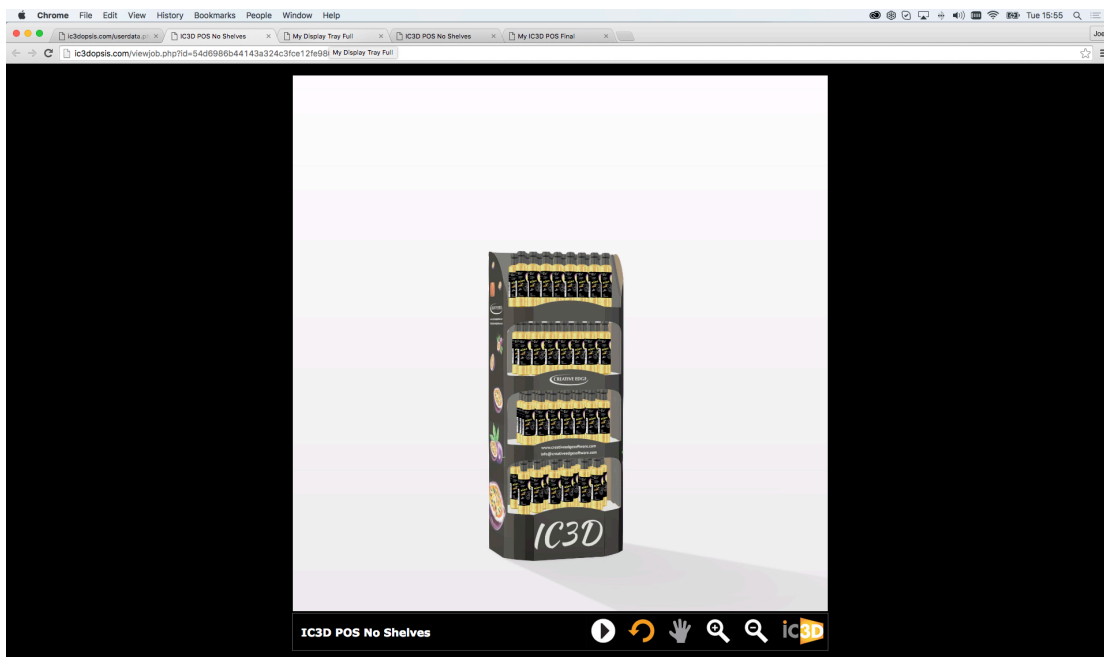


Click “View” This will automatically launch the model and open it within the Opsis viewer using your default web browser, on your machine.

Click “Close” when you are finished viewing & sharing, etc , this will close the Hyperlink box.

Viewing & Interacting with your Model in the Opsis viewer

When you launch a model to view in Opsis, you can instantly interact with it just by clicking on the model and dragging it with your mouse. This will allow you to rotate your model in a full 360° rotation on the horizontal and vertical axis.



You will also notice a control panel at the bottom of the screen

Control Panel



The model file name is displayed in the bottom left hand corner of the panel.
There are 7 buttons to click on to perform the following tasks:
(**Please note:** that only 6 buttons will be in view at any one time)



Zoom In tool, to zoom in on your model



Zoom out tool, to zoom back out from your model



Pan Tool, this becomes active when you are zoomed in on your model. Select this tool when it is available to pan around the model. When zoomed in, click and drag on the model to pan with this button selected.



Rotate model tool, will allow you to rotate a model in a full 360° rotation on the horizontal and vertical axis, once zoomed in. Click this button when zoomed in to activate this feature, and then click on and drag the model to rotate it.



The Play button, this will play any exported “Spin Animation”, or “Timeline Animation” exported with the model from iC3D, click play to play the animation.



Click stop, to stop the “Spin Animation”.

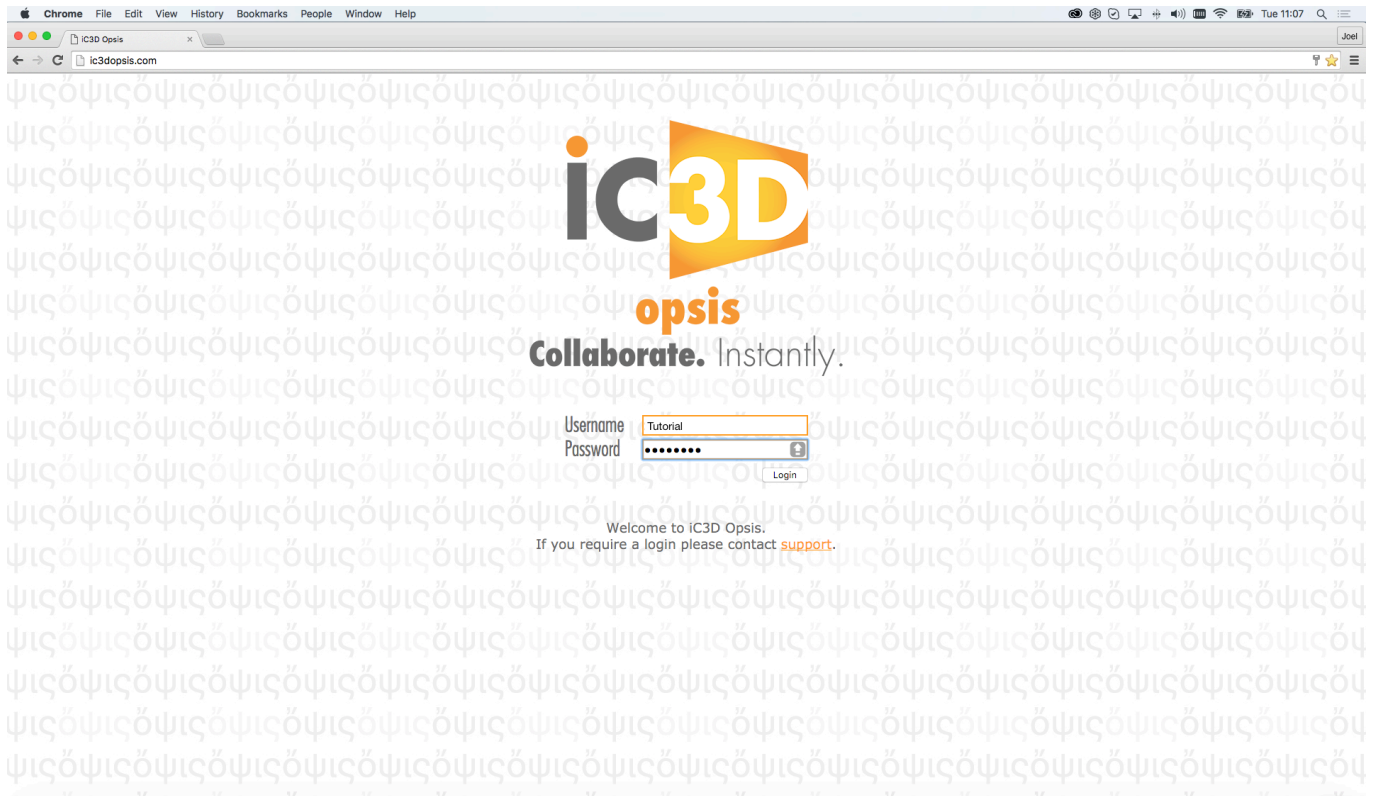
(**Please note:** the “Spin animation” plays on a continual loop until you press the stop button, the “Timeline Animation” resets itself when it reaches the end of the sequence, and the stop button only appears once you press the play button).



iC3D logo, if you click this button your web browser will automatically open a new tab and direct you to our web site creativeedgesoftware.com

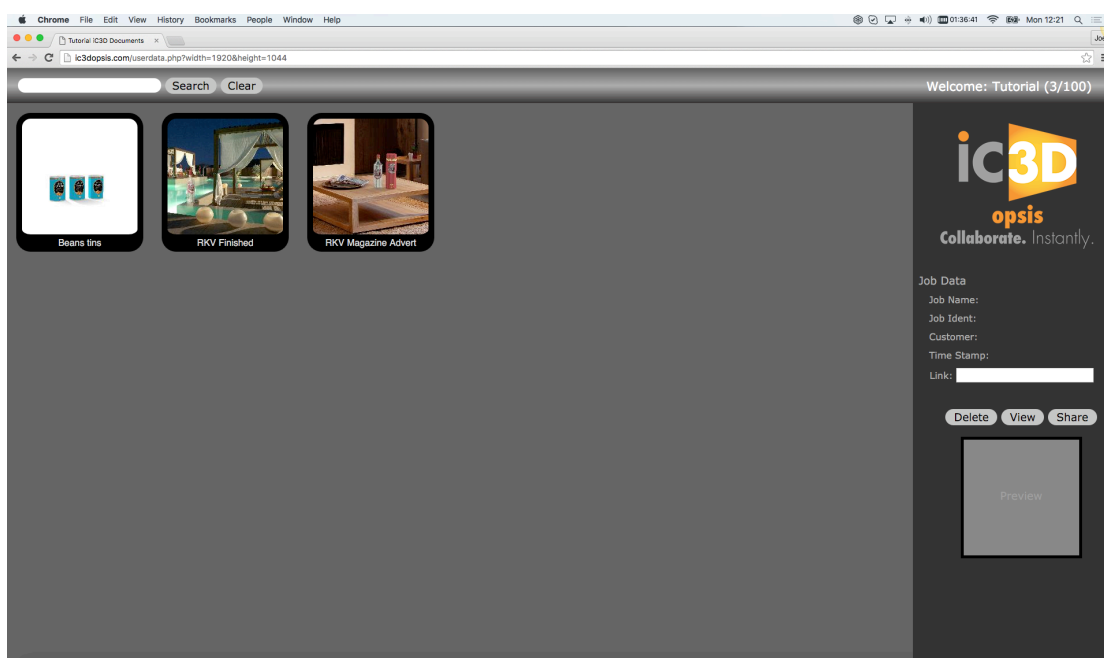
How To Manage your Opsis Account online

Go to your Web Browser and type in ic3dopsis.com into the address bar, this will direct you to the Opsis account Log-in Screen.



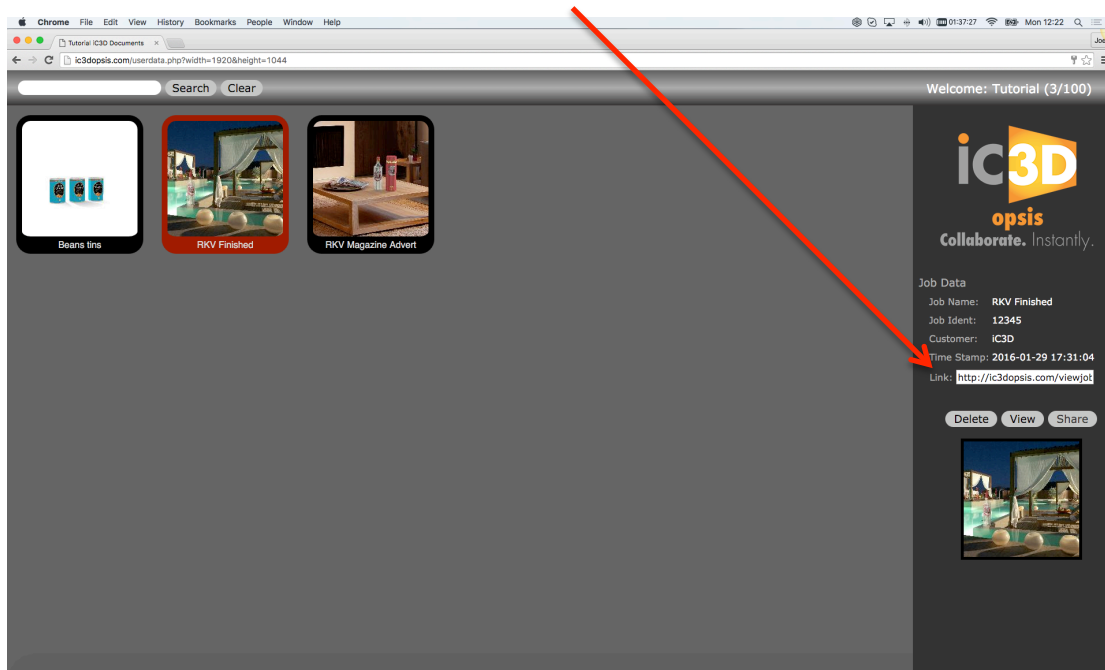
You will need to enter your Username & Password where stated (this is your Opsis account log-in details that was provided to you), and click the “Log-in Button”

Once Logged in you will see your account screen with thumbnail images of all the models that have been exported from ic3D to your Opsis account.



Click on a thumbnail you wish to work with, this will be highlighted in red as above as you scroll over any models thumbnail.

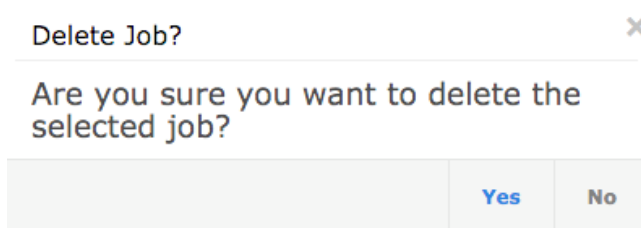
You will then see a thumbnail of that model appear on the bottom right hand corner of your screen, above it will be the naming details that you entered when exporting the model from iC3D with a date and time stamp of when the model was exported to your Opsis account, and the Hyperlink generated for that model.



You can now complete one of the following actions:

Click "Delete", this will remove the model from your Opsis account permanently. This will be useful if a model is obsolete, or when you have reached your maximum upload limit to make space for future uploads.

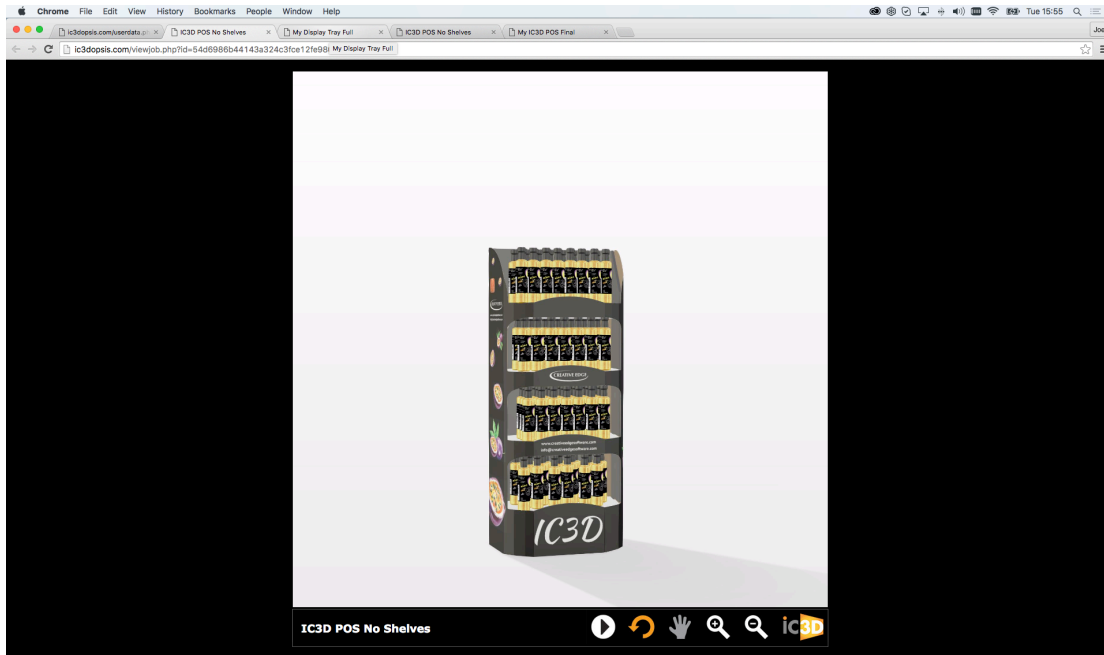
When you click "Delete" a box will appear on the screen as a security measure. This is for you to confirm by clicking "Yes, or No" that you intended to delete the selected model.



Click "Yes", this will confirm deletion and remove the selected model from your Opsis account.

Click "No", this will go back to the previous screen and close the box.

Click “View” This will automatically launch the model to view in your default web browser.



Click “ Share” this will embed the generated Hyperlink in to a default email, you can then share the link with anyone you require to view the Opsis file. Just Ask them to click on the Hyperlink and this will automatically launch the model and open it within the Opsis viewer using their default web browser, on their machine.

