



PDF Compressor Desktop

Manual

Version 6.0

USA

LuraTech, Inc.
PMB #708
270 Redwood Shores Parkway
Redwood City, CA 94065
USA
+1 (650) 481 - 8156
+1 (650) 779 - 4644 (F)

www.luratech.com
info@luratech.com

UK

LuraTech Ltd
Oban House, Rope Yard
Royal Wootton Bassett
Wiltshire, UK
SN4 7BW
+44 (0) 1793 85 21 00
+44 (0) 1793 23 82 52 (F)

Germany

LuraTech Europe GmbH
Neue Kantstr. 14
14057 Berlin
Germany
+49 (0) 30 / 39 40 50 - 0
+49 (0) 30 / 39 40 50 - 99 (F)

LuraTech Europe GmbH

Willy-Brandt-Platz 1
42853 Remscheid
Germany
+49 (0)2191 / 589 60 - 0
+49 (0)2191 / 589 60 - 29 (F)



Table of Contents

| | |
|--|-----------|
| 1. Introduction | 3 |
| 2. Installation | 4 |
| System Requirements | 4 |
| Setup | 4 |
| 3. Using PDF Compressor Desktop | 5 |
| Overview | 5 |
| Elements of the User Interface | 5 |
| First Steps..... | 6 |
| Compression Options..... | 6 |
| Assembling Input Files | 8 |
| Choosing the Output File | 10 |
| The Compression Process | 10 |
| Compression Result | 10 |
| Sending Results via E-Mail | 11 |
| 4. Windows™ Explorer™ Extension | 12 |
| Using the Explorer Extension | 12 |
| 5. Licensing..... | 14 |
| Evaluation | 14 |
| Requesting a License..... | 14 |
| Installing a License | 14 |
| 6. Troubleshooting | 15 |
| Troubleshooting the E-Mail Function | 15 |
| 7. Support and Contact..... | 17 |



1. Introduction

LuraTech PDF Compressor Desktop is a standalone application for decentralized document processing. It serves for manual compression of documents and for converting them to PDF or PDF/A.

The outstanding document compression provided by the PDF Compressor Desktop greatly reduces file sizes while ensuring prime document quality in an ISO standard compliant format suitable for long-term archiving.

This makes the Desktop version of LuraTech's PDF Compressor the ideal solution for PDF conversion and compression of scanned documents directly on the end-user's PC.

Both in the private and business sector LuraTech PDF Compressor Desktop serves to tackle the following tasks:

- Reducing the file size of scanned documents
- Creating full-text searchable PDFs from scanned pages
- Compressing scanned documents in order to send them via e-mail
- Reducing document file size for storage or upload to web sites or the cloud
- Combining digital documents with scanned pages, e.g. appending certificates and credentials to an online application
- Preparing signed and scanned contracts e-mail transmission
- Converting digital and scanned documents to PDF/A for long term archiving
- Optimizing the size of high quality scans.



2. Installation

System Requirements

Windows™ 32 Bit and 64 Bit, XP / Vista / Windows 7 / Windows 8 / Windows Server 2003 / Server 2008 / Server 2012

RAM: 512 MB or higher

Disk space required for installation: 160 MB

Microsoft™ .NET Framework 2.0 or higher

Setup

Start the installation program and follow the instructions shown. Choose installation type “Standard” to install the typical range of features. For manual selection of features to install, choose the type “User Defined”.



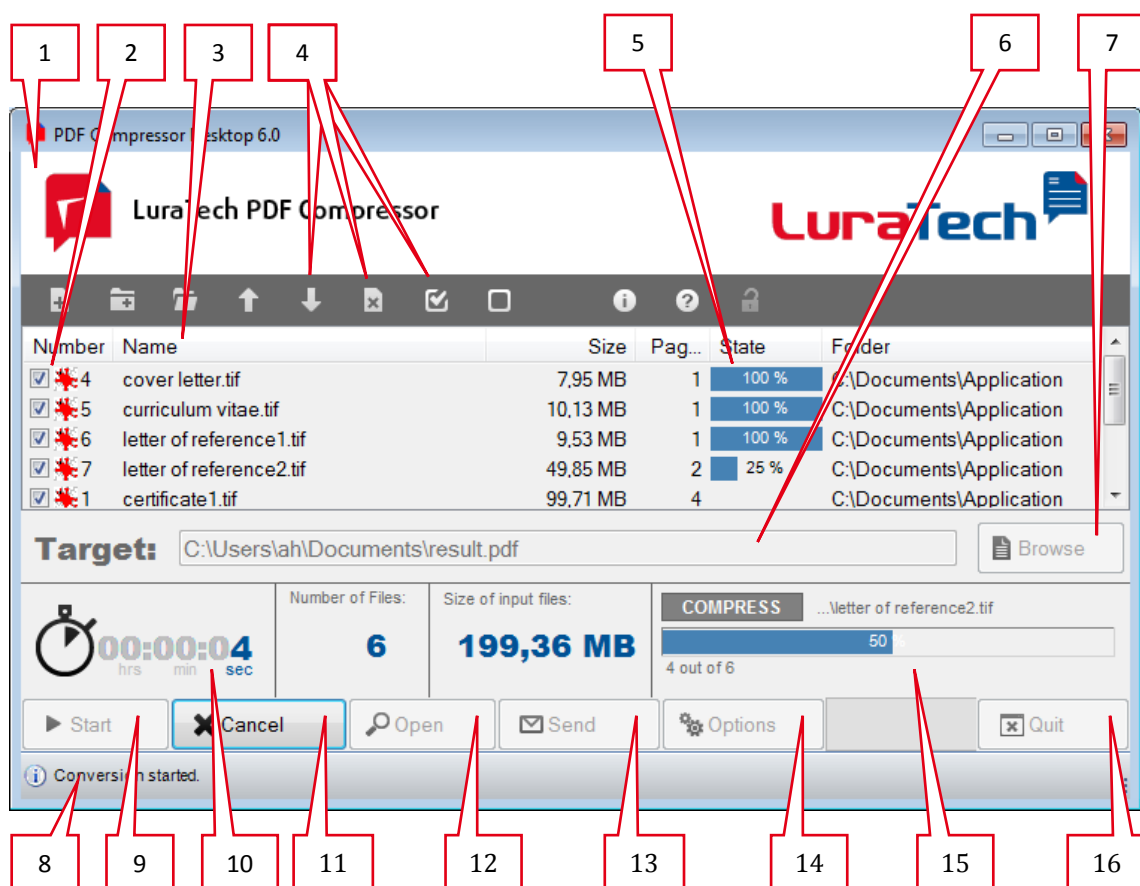
3. Using PDF Compressor Desktop

Overview

LuraTech PDF Compressor Desktop provides the following processing options.

- Conversion and compression of one or more input files of any of the following formats: TIFF (.tif, .tiff), JPEG (.jpg, .jpeg), PDF, BMP, PNM (.ppm, .pgm). These input files may reside in arbitrary file system folders.
- Output as PDF (Version 1.5) or PDF/A (ISO 19005-2 compatible PDF/A-2u)
- Integrated text recognition (OCR) for full-text searchable output
- Direct sending of created PDFs via e-mail

Elements of the User Interface






1. **Title bar** – clicking on the title bar will open up LuraTech’s website in your browser.
2. **Input file list** – this is the list of files to compress. It is initially empty and is populated by adding one or more input files. The checkboxes in the leftmost column specify, whether a file is added to or omitted from the PDF output file generated.
3. **Column headers** of the input file list can be clicked to sort the input file list, e.g. by name or file size.
4. **Toolbar buttons** perform various functions.
5. **Per-file progress bars** are displayed during an active compression process.
6. **Output file entry** – the name and location of the PDF output file to generate.

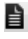





7. **Browse button** – serves to browse for the output file location.
8. **Status bar** – usage and status information is displayed here.
9. **Start button** – click this button to begin compressing the input files.
10. **Timer** – shows the time elapsed for compression.
11. **Cancel button** – click this button to abort a running compression process.
12. **Open button** – serves to open the generated PDF file.
13. **Send button** – click this button to create an e-mail message with the generated PDF file as an attachment.
14. **Options button** – opens the configuration dialog for compression options.
15. **Overall progress bar** – shows the general progress of a running compression process.
16. **Quit button** – click here to quit PDF Compressor Desktop.

First Steps

1. Start LuraTech PDF Compressor Desktop by clicking on the  symbol on your Windows desktop.
2. Choose the documents to convert jointly. PDF Compressor Desktop will combine all selected files on the list of input files to form one multi-page PDF file. To convert input files into PDFs individually you have to process them one after another.

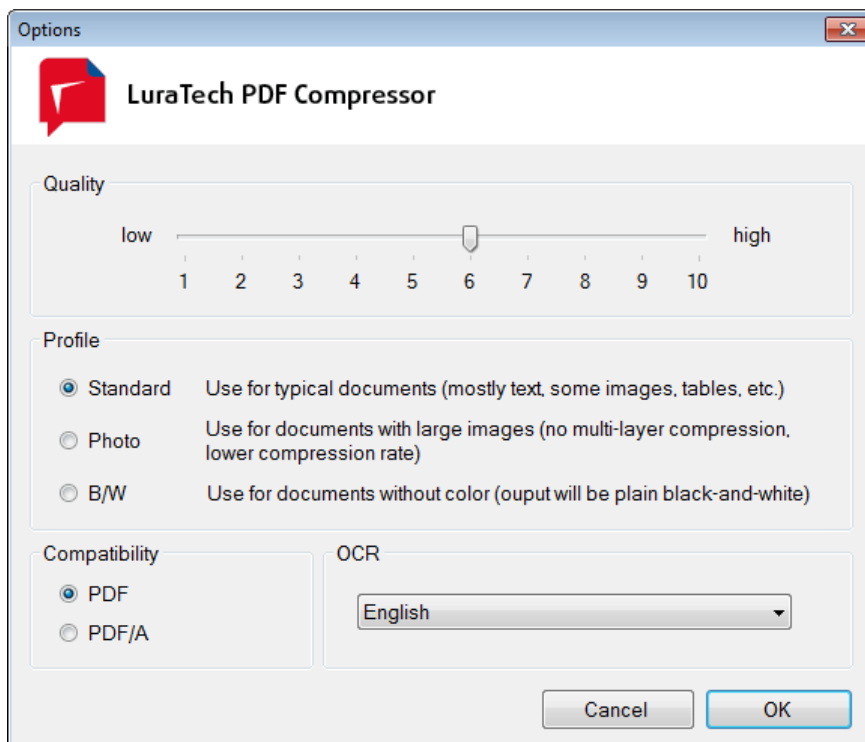
To insert a file in the input file list click the  toolbar button and then select it in the file browser dialog. Using the  button you can add all files from a folder that have suitable file types.

3. Pick a target folder and file name for the PDF output file by clicking on the  **Browse** button.
4. Click the  **Start** button to initiate the conversion.
5. Once processing has finished you can view and check the result using the  **Open** button.
6. The  **Send** button lets you directly create an e-mail message with the compressed PDF file attached.

Compression Options

LuraTech PDF Compressor Desktop produces highly compressed PDF files, which remain well-readable and are augmented with OCR results for full-text searchability. The standard settings yield best results for common input. Still, the compression quality and other parameters can be adjusted to meet specific needs.

Open the compression options dialog by clicking on the  **Options** button.



Quality

The quality slider controls the relation of visual quality and compression rate of the output. A higher quality results in less compression – i.e. a larger output file size – and vice versa.

The default quality value 6 yields high compression and good quality for typical scanned documents. We recommend trying different settings and comparing the results, as optimum quality depends on characteristics of the input as well as on subjective criteria.

Note: While the profile B/W is selected the setting of the quality slider has no effect.

Profile

Three different profiles are available, each specifically influencing the compression.

- **Standard**

The Standard profile can be used universally. It results in a particularly high compression of color documents. The technology used here is LuraTech's Mixed Raster Content (MRC) compression.
- **Photo**

For input with rather image-like characteristics the compression achieved by the Standard profile may not be satisfactory as photographic images may show compression artifacts. In such cases you should use the Photo profile, where mere image compression is applied rather than the Mixed Raster Content (MRC) algorithm. On the other hand the Photo profile will not reduce the file sizes by the same rate as the Standard profile.
- **B/W**

With this profile PDF Compressor Desktop produces strictly black-and-white (B/W) output. Use this profile if your input is black-and-white already or if you wish to eliminate superfluous color information from the input documents. In case your documents were scanned to black-and-white files, the results do not differ from those of the Standard profile. Otherwise the B/W profile can produce even smaller results.



Compatibility

These options let you configure whether „normal“ highly-compressed PDF files are generated or whether PDF/A compliant files are produced, which are more suitable for long-term archiving.

- **PDF**
Creates PDF files compliant with PDF Version 1.5 (or 1.6 in exceptional cases with extremely large pages). These files can be opened with Adobe™ Reader™ version 6 (or 7 respectively) or higher as well as all alternative PDF viewers supporting at least PDF version 1.5 (or 1.6).
- **PDF/A**
Creates PDF files compliant with ISO Standard 19002-2 (PDF/A) for secure long term document archival.

OCR

LuraTech PDF Compressor Desktop comprises automatic text recognition (OCR). In addition to the compression outlined above, this feature serves to create full-text searchable PDF files from scanned input.

Use the dropdown list to select the text recognition language. Choose the language most prominent on your documents. Supported languages are German (old and new spelling), English, Spanish and French.




The dropdown list also allows disabling the OCR by selecting the “No text recognition” entry. This increases processing speed, but creates PDF output which is not full-text searchable.

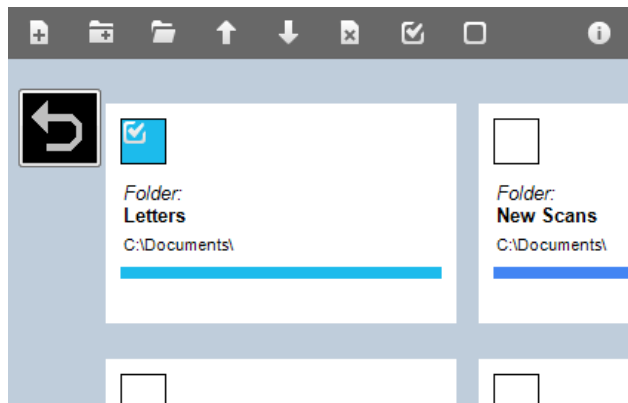
Assembling Input Files

One or more input files can be converted into one PDF output file in one pass. For a subsequent conversion empty the input file list and then choose the next input file – or files – to process.

Selecting Input Files

Input files can be chosen in either of the following ways:

1. Click the  button to open a file browser dialog, where you can choose a single file to add to the list of input files. Choose the  button to add all files with matching file types from a selected folder.
2. You can drag-and-drop files or folders from your Windows™ Desktop or from a Windows Explorer™ onto the input file list. To do so click on a file or folder symbol in Windows Explorer, keep the mouse button pressed while moving the mouse pointer onto the PDF Compressor Desktop's window and then release the button.
3. The  button opens a list of recently selected folders. Clicking on one of these folder entries adds all matching files from the corresponding folder to the input file list.



Editing the Input File List

Whenever the input file list contains more than one file the sequence of the list entries can be modified. This sequence determines the order in which the file's contents will appear in the output PDF file. Moreover, individual entries on the list can be excluded from the conversion process.

| Number | Name | Size | Pag... | State |
|---------------------------------------|--------------------------|----------|--------|-------|
| <input checked="" type="checkbox"/> 4 | cover letter.tif | 7,95 MB | 1 | |
| <input checked="" type="checkbox"/> 5 | curriculum vitae.tif | 10,13 MB | 1 | |
| <input checked="" type="checkbox"/> 6 | letter of reference1.tif | 9,53 MB | 1 | |
| <input checked="" type="checkbox"/> 7 | letter of reference2.tif | 49,85 MB | 2 | |
| <input checked="" type="checkbox"/> 1 | certificate1.tif | 99,71 MB | 4 | |
| <input type="checkbox"/> 2 | certificate2.tif | 8,39 MB | 1 | |
| <input checked="" type="checkbox"/> 3 | certificate3.tif | 22,18 MB | 1 | |

Sort the entries according to file name by clicking on the „Name“ column header. A second click will invert this sort order, i.e. the files will be sorted in reverse alphanumeric order. In the same fashion the other column header can be used to sort input files according to file size, number of pages or the sequence in which they were added to the list (“Number”).

Moreover, you can manually position entries by selecting a row and use the and buttons to move the entry up or down. Alternatively you can use drag-and-drop within the list. To do so click on a entry in the list, keep the mouse button pressed while moving the mouse pointer to the desired position and then release the button.

List entries can be excluded from the compression/conversion process by un-checking the checkbox at the beginning of its row. The button un-checks all entries at once; the button checks all list entries.

To remove an entry from the list, select it and either click on the button or press the [Del] key.



Choosing the Output File

| | | | | | | |
|-------------------------------------|--|---|--------------------------|----------|---|--------------------------|
| <input checked="" type="checkbox"/> | | 4 | cover letter.tif | 7,95 MB | 1 | C:\Documents\Application |
| <input checked="" type="checkbox"/> | | 5 | curriculum vitae.tif | 10,13 MB | 1 | C:\Documents\Application |
| <input checked="" type="checkbox"/> | | 6 | letter of reference1.tif | 9,53 MB | 1 | C:\Documents\Application |

Target:

The entry below the input file list serves to specify the name and location of the PDF output file to generate. The file name entered here must end with “.pdf”). You can type the path into the entry or use the button to display a file selection dialog.

Note: If the selected file exists a notification dialog will inform you and let you choose to overwrite the existing file.

The Compression Process

To start the compression process, click the button.

While compression or conversion is actively running, its progress is displayed. Input files are converted in the order of their list entries. For each entry a progress bar is shown in the “Status” column. Below the list the time elapsed and a progress bar for the overall process is displayed.

An active compression or conversion can be aborted using the button. In this case no output PDF file is generated. Please note that some process steps – such as the OCR for one page – cannot be interrupted. Therefore some time may pass after clicking , until processing effectively ceases.

Compression Result

| | | | | | | |
|----------|------------------|----------------------|----------------------|---------|---|-------|
| | Number of Files: | Size of input files: | Size of output file: | Result: | | Rate: |
| 00:00:10 | 6 | 157,89 MB | 3,59 MB | clean ✓ | <input type="checkbox"/> Input <input type="checkbox"/> Output | 2% |


After conversion has been completed a summary is displayed instead of the progress bar, containing – from left to right – the overall processing time elapsed, the number of files




processed, their original sizes, the output file size and the result status (no errors, canceled, errors) and the compression rate achieved. In the above example e.g. the input files could be compressed to 2% of their original file size.

PDF Compressor Desktop can compress some input files better than others. Usually very good results are achieved for scanned documents. In certain cases or if PDF/A is selected as the output format, output files may even be larger than the inputs. In these cases PDF Compressor Desktop displays a notification after processing.

Sending Results via E-Mail

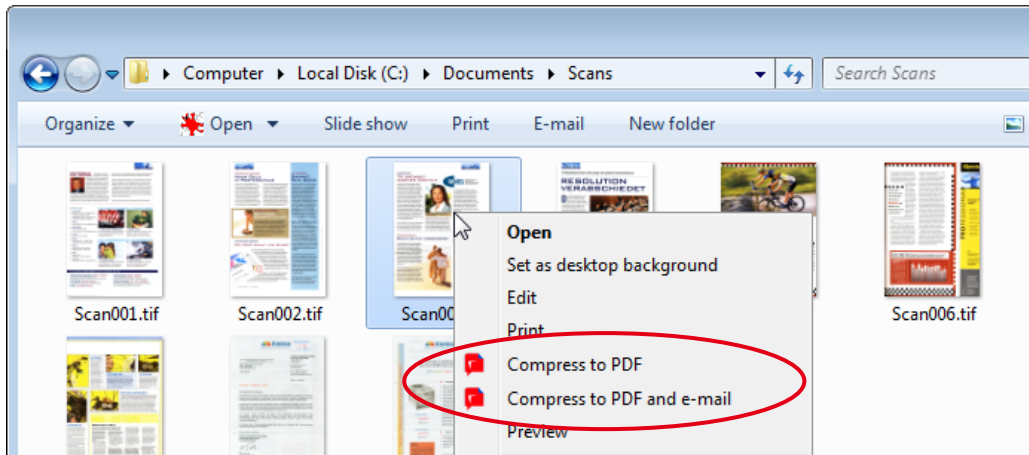
After successful compression you can directly send the result as an attachment to an e-mail message. To do so click on the  **Send** button and a new e-mail message will be generated, containing the PDF result as an attachment. This function calls the installed e-mail client, e.g. Microsoft Outlook™, Windows Live Mail™, Mozilla Thunderbird™, Outlook Express™, etc.

Should no e-mail message be displayed after clicking the  **Send** button, please refer to the section ***“Troubleshooting the E-Mail Function”*** on page 15.



4. Windows™ Explorer™ Extension

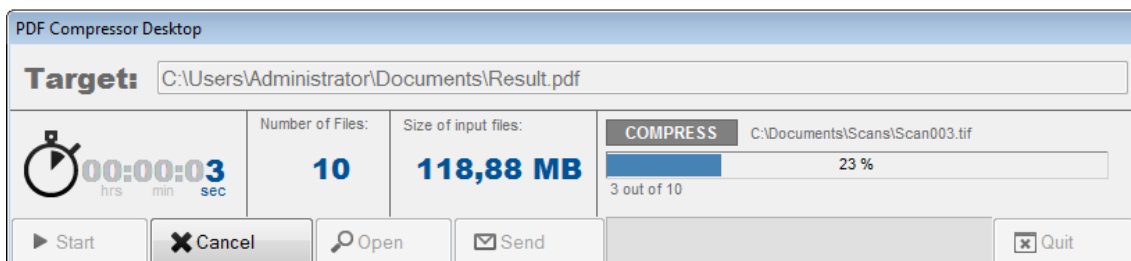
LuraTech PDF Compressor Desktop extends the context menus of Windows Explorer™ for all supported input file types and all folders containing supported file types. The context menu entries read „Compress to PDF“ and „Compress to PDF and e-mail...“.



Using the Explorer Extension

Select one or more image or PDF files in Windows Explorer and click the right mouse button to open the context menu. Alternatively you can right-click on a folder containing one or more such files. Then choose either of the two entries – „Compress to PDF“ and „Compress to PDF and e-mail...“.

PDF Compressor Desktop will immediately begin processing the files concerned using the settings last chosen in the Options dialog (see chapter „**Compression Options**“, page 6). During conversion a progress dialog is displayed.



You can abort this conversion by clicking on the „Cancel“ button.

If you chose „Compress to PDF“ the output is written to the target file last chosen in PDF Compressor Desktop (compare „**Choosing the Output File**“, page 10). If this file already exists, a notification dialog will appear, prompting you to confirm the overwriting of the existing file.

If you chose „Compress to PDF and e-mail...“ a new e-mail message will be displayed after successful compression, bearing the compressed PDF result file as an attachment. Note: You must complete and send this message before you can start the next compression process via the context menu.

In case no e-mail message appears or an error message is displayed, please refer to chapter „**Troubleshooting the E-Mail Function**“, page 15.



Note: During installation of PDF Compressor Desktop you can choose not to install the Windows Explorer extension by selecting the installation type “User Defined”.



5. Licensing


Evaluation

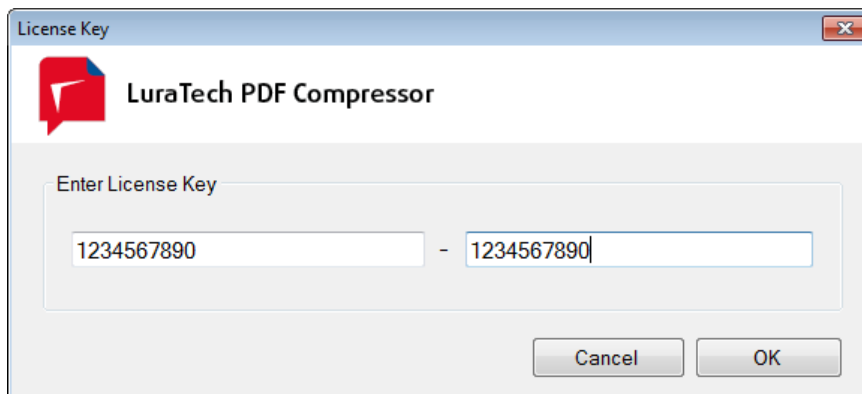
After installation LuraTech PDF Compressor Desktop runs in evaluation mode at first. In this mode the application is fully functional and ready for thorough testing, but all pages of the PDF output files are marked with a LuraTech watermark. This watermark is semi-transparent, such that the compression results can still be evaluated.

Requesting a License


A license for LuraTech PDF Compressor Desktop can simply be purchased online through LuraTech's website <http://www.luratech.com>. Alternatively, you can issue an order per mail or telephone. You will then receive a license key consisting of two numbers.

Installing a License

Once you have received a license key for PDF Compressor Desktop you are ready to register your application by entering the key in the licensing dialog. To open this dialog click the  button.



Enter the two numbers comprising the license key here and confirm by clicking "OK". A confirmation message will be shown upon successful registration.

Once your LuraTech PDF Compressor Desktop installation is licensed, the padlock symbol on the toolbar will change to show an open lock symbol .

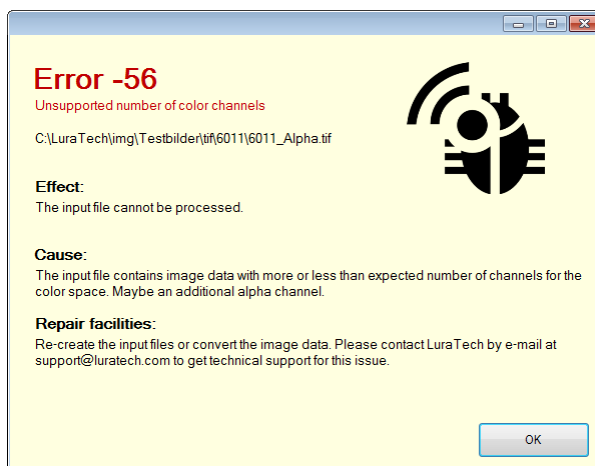


6. Troubleshooting

All files added to the input file list are checked briefly. If a problem occurs – e.g. if a file with a “.pdf” extension is obviously not a valid PDF file – the corresponding list entry is marked in red.

| Number | Name | Size | Pag... | State | Folder |
|--------|-------------|---------|--------|-------|--------------------|
| 1 | ScanXYZ.tif | 93 KB | 0 | | C:\Documents |
| 2 | Scan001.tif | 7.95 MB | 1 | | C:\Documents\Scans |

If an error occurs during compression or conversion, processing is aborted and an error message is displayed. This message will comprise cause and effect of the error – as far as they can be determined. Moreover possible ways of avoiding the problem are shown.



PDF Compressor Desktop writes log files to the current user’s application data folder (e.g. C:\Users\\AppData\Roaming\LuraTech under Windows 7) named “Logfile_PdfCompressorDesktop.log” and “Logfile_PdfDtShell.log”. If you incur problems and contact LuraTech’s support it may be helpful to send these log files in order to investigate the issues.

Troubleshooting the E-Mail Function

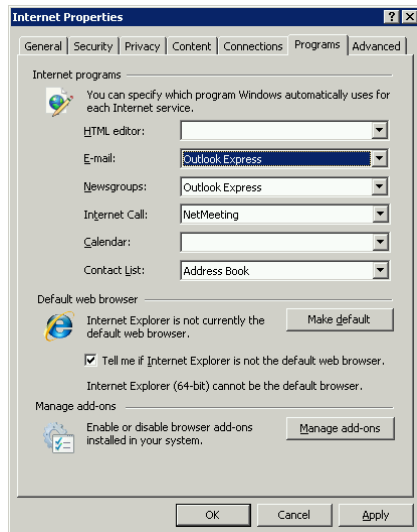
LuraTech PDF Compressor Desktop can create new e-mail messages and append its compression results as attachments using Microsoft’s MAPI (Messaging Application Programming Interface).

In order to use this e-mail feature of PDF Compressor Desktop an e-mail client supporting the MAPI interface must be installed on your computer as the system’s standard application for sending and receiving e-mails.

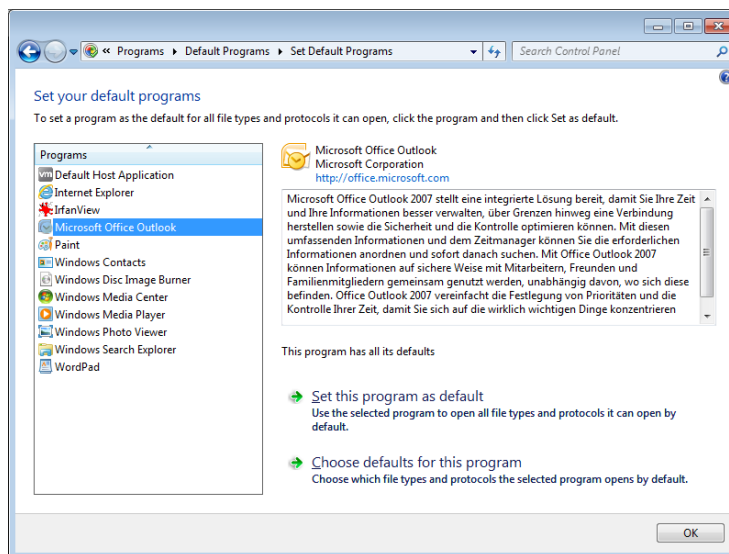
If you incur any problem with PDF Compressor Desktop’s e-mail feature please check the following:

1. Is a MAPI compliant e-mail client installed, e.g. Outlook™, Outlook Express™, Windows Live Mail™, or Mozilla Thunderbird™?
2. Is this e-mail client configured as the standard e-mail client?

Windows XP, Windows Server 2003: In Internet Options (Start → Control Panel → Internet Options) open the tab „Programs“ and make sure that the correct program is selected for e-mail.



Windows Vista, Windows Server 2008 and above: Open the configuration panel for standard programs (Start → Control Panel → Default Programs). Choose „Set your default programs“, select the e-mail client from the list and click „Set this program as default“.




3. Is a previously generated e-mail message still pending?
Due to the nature of the MAPI interface the previous message must have been sent (or deleted or saved as a draft and closed) before PDF Compressor Desktop can create the next message.
4. Is the e-mail client open?
In some cases problems occur if the e-mail client is already running. Please close all the client's windows and quit the client. Afterwards please try PDF Compressor Desktop's e-mail function again.



7. Support and Contact

If you incur any problems installing or using LuraTech PDF Compressor Desktop you can contact LuraTech's support via e-mail. Please always include the following information:

1. The version number of LuraTech PDF Compressor Desktop, e.g. 6.0.0.84. This number is shown in the "About..." dialog available through the  button.
2. The computer's operating system, e.g. Windows 8.
3. A description of the error and the Logfile_PdfCompressorDesktop.log and Logfile_PdfDtShell.log files from the current user's application data folder.

Please send your request to: support@luratech.com

You can find further information and contact data on our web page: <http://www.luratech.com>

The specifications contained herein are subject to change without notice.

LuraTech shall not be liable for errors contained herein or for incidental or consequential damages (including lost profits) in connection with the furnishing, performance or use of this material whether based on warranty, contract, or other legal theory.

© 2013 LuraTech Imaging GmbH
Willy-Brandt-Platz 1
42853 Remscheid
Germany