



The CAD software for packaging design

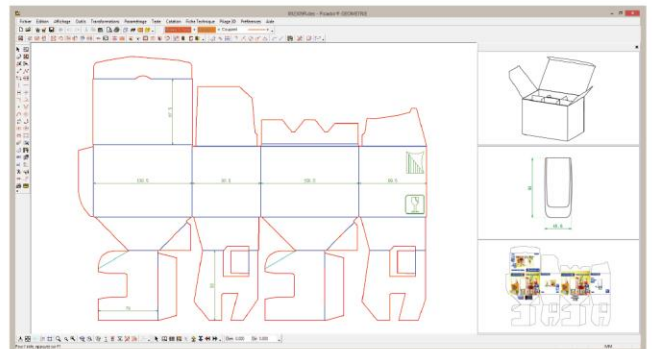
2D

- **Structural design**
- Specific drawing tools for packaging & Display
- **Import/export (cf2, dxf, ai, eps, pdf)**
- Layout / Step and repeat
- Parametric design



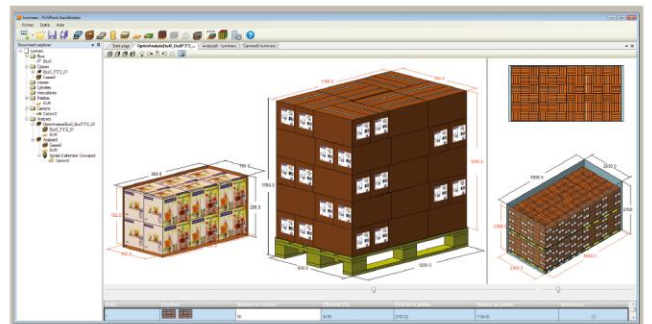
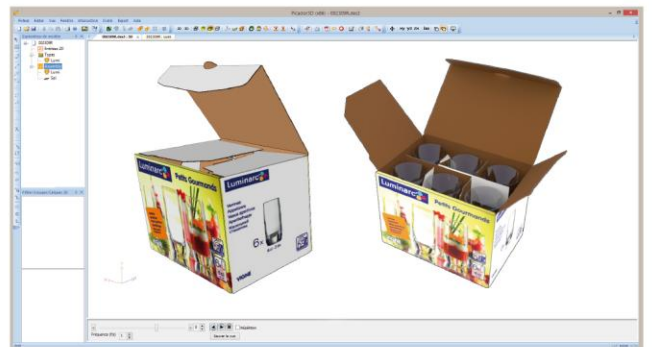
Cutting

- **Manage all the Cutting tables**
(ZUND, ARISTO, KONGSBERG, LASERCOMB, SEI, WILD, GRAPHTEC, SUMMAGRAPH, iECHO, ELCEDE, MIMAKI, ...)
- **Prototyping and small series productions**
- Tools settings according to the used material
- Automatic optimization of tools path



3D

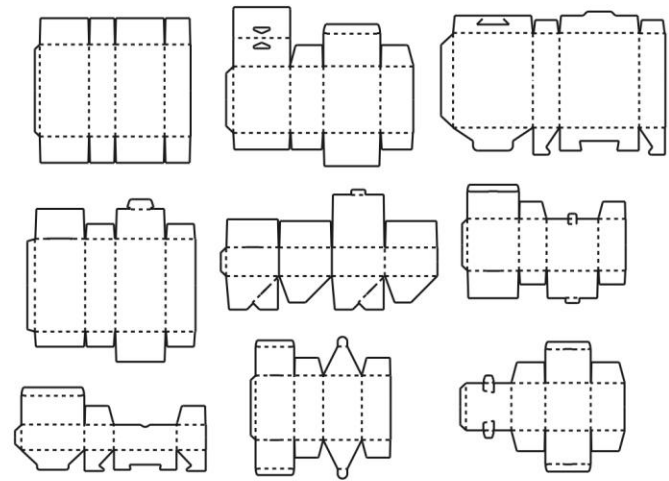
- Automatic **2D / 3D folding**
- Folding / Unfolding 3D Animation
- **Printing Files or Texture Positioning**
- 3D animated assembly
- Creation of Interactive and **Animated 3D PDF**
- Create visual user instructions
- Import of CAD objects and 3D textured model
- Augmented reality View of 3D models



Database

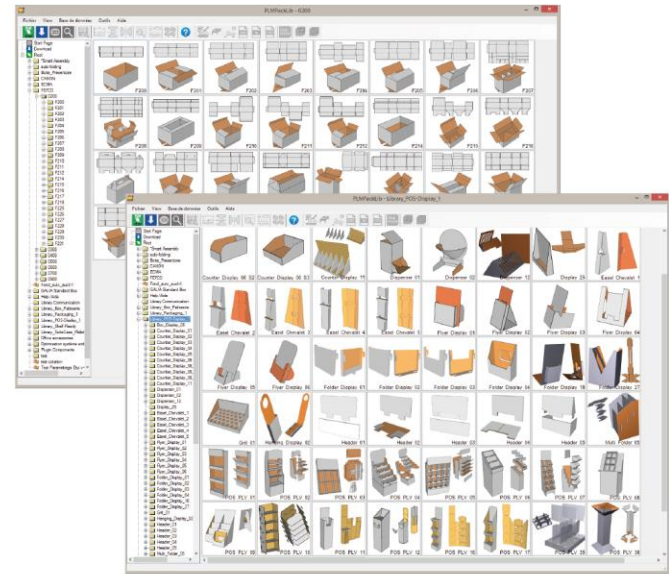
- **Packaging Standards libraries (ECMA, FEFCO...)**
- Specific packagings and **POS libraries**
- Automatic **thickness management**
- 3D folding animation
- Download new library and access to tutorials
- Export to Adobe Illustrator, PDF, Picador...
- Optimize (**Layout, Case-filling , Palletizing**)
- Create your own parametrical models in PICADOR
- Synchronise the database on your network

Infinity of possibilities



Eco-design

- **Filling cartons/case, palletizing, truck**
- Optimal case calcul
- Material choice assistance
- Strength analysis
- **Automatic analysis report**



PICADOR - CALCUL RCV v2.0

ENVIRONNEMENT
 Taux d'humidité: 76.6%
 Durée Stockage: 1 - 3 jours
 Surface Imprimée: Simple

CAISSE
 Type: Caisse Américaine
 L: 400.1 mm, B: 300.0 mm, H: 199.5 mm, Poids Total: 15.00 Kg
 Longueur Porteuse Totale Coordon: 670 mm
 Nb Produits par Caisse: 1

CARTON
 Qualité: BC_275Grade-976 g/m2
 Profil: Corrugé
 Épaisseur: 6.82 mm
 ECT: 10.07 kN/m
 Rigidité Dx: 40.38 N.m
 Rigidité Dy: 23.05 N.m

PALETTISATION
 Palette: Europallet 1200 x 800
 Longueur: 1199.9 mm, Largeur: 800.1 mm, Hauteur: 145.0 mm, Poids: 25.00 Kg
 Nb CASSES / Couche: 7
 Nb COUCHES / Palette: 7
 Nb Caisse = 49

TOTAL : poids = 749 Kg, hauteur = 1444 J mm, nb Cais. / couc. = 7, nb Caisse = 49

Qualité Carton	Profil	BCV Stat (daN)	BCV Imp (daN)	Palett
01 BC_350Grade-1137 g/m2	745.1	365.1	2.1	1.0
02 BC_275Grade-991 g/m2	657.4	322.1	2.1	1.0
03 BC_275Grade-1025 g/m2	636.1	292.9	2.0	1.0
04 BC_275Grade-971 g/m2	604.7	296.0	1.9	1.0
05 BC_350Grade-1027 g/m2	601.8	294.7	1.9	1.0
06 BC_275Grade-976 g/m2	588.9	288.6	1.8	1.0
07 BC_275Grade-923 g/m2	519.8	254.7	1.5	1.0
08 BC_200Grade-530 g/m2	504.9	247.4	1.4	1.0

Watch our videos

