

Scanner Vision™

# LINKING YOUR PAPER WORLD TO YOUR DIGITAL DATA



 **scannervision™**



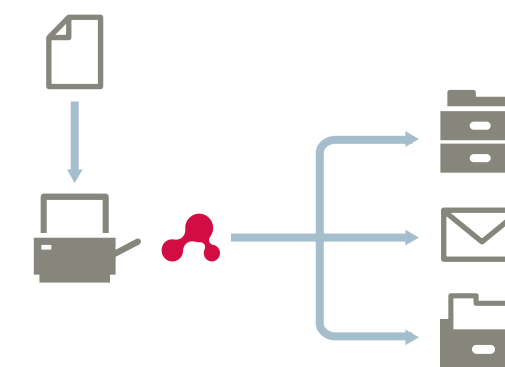
Scanner Vision™

# PUTTING PAPER WORKFLOWS INTO OVERDRIVE



Scanner Vision™ is the answer to disparate electronic and paper filing systems and procedures by bridging the gap between paper documents, scanned images and document management systems. Combining powerful features with ease-of-use, Scanner Vision™ delivers documents on demand, with seamless integration with existing document systems and office equipment.

At the heart of the Scanner Vision™ document capture system is the template-driven, document processor. This processor hosts the individual document workflows and provides the connections to email and file servers in addition to document systems.



Scanner Vision™ clients connect to the central processing engine and display a simple touch-button interface to access these workflows, from the panel of a multifunctional device or via the Windows® desktop client.





Bridge the gap

# THREE SIMPLE STEPS TO DELIVER DIGITAL DATA

By converting paper files into streamlined digital documents, Scanner Vision™ can automate paper intensive business processes and dramatically improve efficiency. Unlocking the information in your paper documents takes just three simple steps

### CAPTURE

Files are captured from desktop scanners, office multifunctional devices, email servers and hot-folders.

### PROCESS

Documents are processed with the configuration in the workflow template, combining tasks such as image enhancement, text recognition and barcode scanning.

### STORE

Output automatically distributed via email, stored on file servers or filed in document systems with a specific Scanner Vision™ output connector.

Processes, or document types, are created as “workflow templates” in the administration application. Creating new templates is effortless and instinctive thanks to the easy-to-use administration console, which guides the user through the steps required in making a process template.

Multiple document storage locations may be defined by the workflow template, ensuring that operators do not have to remember any specific information, or perform complex tasks, to achieve efficiency.

Information used to file documents can be obtained by posing simple questions to the scanning operator or information inside the document, such as barcodes, invoice numbers and address fields. Optional modules can also detect the information stored in advanced 2D barcodes, document marks and even human handwriting.



Take control

# PERFECTING PAPER PROCESSES

### CAPTURE

- 4 Many brand s of office multifunctional.
- 4 Any TWAIN enabled scanning device.
- 4 Support for digital pen devices.
- 4 Email servers.
- 4 FTP servers.
- 4 Hot-folders.

### PROCESS

- Image enhancement.
- Full-page OCR, Zone OCR, OMR and MICR support.
- Barcode recognition (1D/2D).
- Document and barcode annotation.
- Intelligent handwriting recognition.
- Advanced bi-tonal compression.
- User notification.
- Forms recognition.

### STORE

- File server.
- FTP.
- Email address.
- ODBC-compliant databases.
- VBScript/JScript.
- WebDAV-compliant document system.
- Over 30 document management systems (including Microsoft SharePoint, Laserfiche, DocuWare, Microsoft Dynamics, SuperOffice and many more).

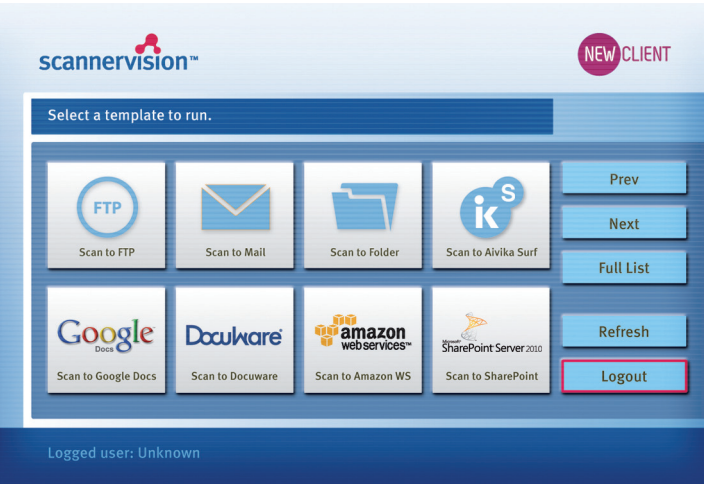
### FLEXIBLE

- Multi-threaded recognition engine.
- Structured metadata export allows you to pass critical data to other business systems.
- Multi-level access control; determine who accesses workflows by device type and user.

Scanner Vision™ leverages current investment in office equipment and infrastructure. The client application can be embedded on a wide range of multifunctional devices and operate via the touch panel screen. For devices without a touch panel, the Scanner Vision™ Desktop Client offers identical functionality and the same look and feel, but from the desktop of your PC.

Once configured, Scanner Vision™ presents users with a one-touch interface to start the capture process. Its intelligent processing engine automatically takes care of all necessary tasks, from capturing to filing the document in the desired destination.

Scanner Vision™ can distribute and route documents to a variety of destinations, from file servers and email (utilising your corporate address book) to CRM, ERP or DMS applications. And the Advanced Bi-tonal Compression module, with its impressive high compression ratio is ideal for creating on-line, searchable electronic archives.





# Using Scanner Vision™

## ONLY THREE STEPS REQUIRED

### Step 1

Import your documents from the desired folder when using any of Scanner Vision™ Desktop clients or just place the originals on the scanner or MFP device. ScannerVision interface will show up. This interface is user-friendly, easy to use and can be totally tailored to your business specific requirements.

### Step 2

Select a process or document type by selecting the appropriate icon. The selected option can be either a certain process or a dynamic workflow; for instance, transforming the document into an email, LDAP directory access or to a document management system.

### Step 3

Press Start key (or import from any Scanner Vision™ desktop client) and that's all! ScannerVision will deal with everything else.

Scanner Vision™ will automatically start a smart process from the capture to the dynamic delivering in destination or desired (or pre-defined) destinations. These destinations can either be simple directory storage to a CREM, ERP or a document management application.



## Connectors

Connectors link Scanner Vision™ servers directly to business or document management systems. Through these connectors the potential of Scanner Vision™ can be directly driven to the exact location within a DMS or ERP, with minimum user interaction. Scanner Vision™ servers also support standard

protocol WebDAV, enabling connexions to a wide range of business and document management systems. Developers have also additionally and SDK to create a native connector that allows to connect ScannerVision to virtually any system.

### Standard connectors



### Optional connectors





# Scanner Vision™ Modules

EVERYTHING  
YOU NEED,  
ONLY A CLICK  
AWAY



## Advanced Bi-tonal Compression

Scanner Vision's ABC module implements an advanced, loss-less compression algorithm to achieve superior compression ratios versus the most popular current methods. ABC technology is also available from the Desktop Client Boost, drastically reducing transfer times from the client to the server.

### The Tecnology

ABC technology enables users to achieve file sizes that are 4 to 5 times smaller than the files sizes generated by standard 1-bit compression types, such as CCITT Group 4.

### The Application

The ABC module can be utilised when there is a requirement to archive large amounts of data as efficiently as possible. Storage requirements are lessened by the superior compression ratios achieved.



## Barcode Annotation

Scanner Vision's Barcode Annotation module enables users to place one of nearly 40 different types of barcode on the documents they scan. Multiple barcodes can be written to the same document and the contents of any metadata library tag can be used as the value. Writing barcodes to scanned documents is especially of use to track documents, which are sent out of the building to other departments or organisations.

### The Tecnology

Scanner Vision™ supports the recognition of many types of barcode printed onto scanned documents, and the Barcode Annotation module takes this a step further by enabling users to write barcodes back onto documents as they are scanned and processed through the system.

### The Application

The Barcode Annotation module is often used to write barcodes onto documents for the purposes of tracking and automated identification. For those documents which may be distributed and later

reprinted, adding a barcode is an easy way of encoding information which can be automatically read and processed later on by another system, or even Scanner Vision™ itself.



## Optical Mark Recognition

Scanner Vision's OMR module makes light work of capturing and processing forms-based data. Able to read marks inside user defined zones, this module can help build automated workflows for directing examination papers, voting forms, surveys, and much, much more.

### The Application

The OMR module is typically used where the automatic analysis and routed of forms is required. Documents such as examination papers, voting forms, and surveys can be captured and the selected choices automatically read, making them easier to analyse.

### The Tecnology

From the workflow template, areas (or zones) of a document are specified for Scanner Vision™ to analyse. If a specific zone contains a mark, the value in the metadata library will reflect this, enabling the user to direct the document through a specific workflow or to the correct destination.



## Zone Recognition

Scanner Vision's ZOOCR module enables the automatic capture of data from specific zones on the document. Invoice numbers, customer codes, addresses; all can be defined and captured independently and used to file the document or route to a special workflow. Zone OCR technology is also available from the Desktop Client Automate, to assist in high-speed document indexing.

### The Tecnology

The Zone OCR module provides the technology to analyse and extract data from just specific areas of a document, whilst increasing OCR precision and delimiting the reading to a zone or specific format.





Cost Effective

# THE POWER YOU NEED AT THE PRICE YOU WANT

Compared to other document capture solutions, Scanner Vision™ offers impressive functionality straight out of the box, but don't let its affordability fool you. Scanner Vision™ is built upon the same award-winning recognition engine as many other document capture products, but with Scanner Vision™ you get a whole lot more for your money.

Included are a host of standard document connectors, enabling the implementation of complete, low-cost, and customizable storage solutions, with no extra licenses to purchase. And in those situations where you need full control over the storage and distribution processes Scanner Vision™ offers the ability to utilise customised scripts (written in VBScript or JScript) which enables the execution of literally any task with the processed output. Systems integrators, VARs and solutions developers can take this one step further with the connector SDK (software development kit) for Scanner Vision™ which enables the development of native, bi-directional document connectors, creating possibilities for unique solution combinations to fulfil any data capture requirement.

The optional functionality in Scanner Vision™ is also very economical to implement, as all additional modules are licensed per-server (not per-client) ensuring that expanding the capabilities of your solution, when required, is equally as affordable.

## STANDARD CONNECTORS

- File system.
- Email.
- FTP.
- SQL Database.
- DocuWare®.
- Google® Docs.
- Microsoft® SharePoint®.
- Objective®.

## STANDARD FEATURES

- Data Export module.
- Industry renown OCR.
- VBScript/JScript connector support.
- Native connector SDK available.







[www.scannervision.com](http://www.scannervision.com)

---

New Dynamic Solutions BVBA  
Metrologielaan 10/15  
1130 Brussel BELGIUM



Follow us on Twitter: ScannerVision

**newdynamicsolutions**  
part of the NDS Group

---

[partners@scannervision.com](mailto:partners@scannervision.com)

Copyright © 2012 New Dynamic Solutions. All rights reserved. ScannerVision™ is a registered trademark of New Dynamic Solutions. All other product names and logos are trade and service marks of their respective companies. All specifications are subject to change without notice. No part of this brochure may be copied or reproduced with prior permission of New Dynamic Solutions. Version 20120312.